

FH
FUTURE HOMES

The Yard

VILLA

Modern Lifestyle in North Jeddah





HASSAN SABER

Project
The Yard
Villa



HASSAN SABER

Project
The Yard
Villa



Project
The Yard
Villa

HASSAN SABER



HASSAN SABER

Project
The Yard
Villa

Units

Ready

To Move In

Important acts

Space \ Buildings

250m \ 615m

Units

Two villas, each on 25th street, a garden, each unit consisting of two floors, an extension, and a driver's room
First floor: bedrooms - 3 toilets - annex (master bedroom with bathroom - maid's room with bathroom and laundry room)

The duration of the project building

11 months

Location

Jeddah , Obhur Al-Shamaliyah , Al Sheraa - Prince Naef Road

Some additional features

10 years building warranty connected to all basic services (water, sewage, electricity and communications)

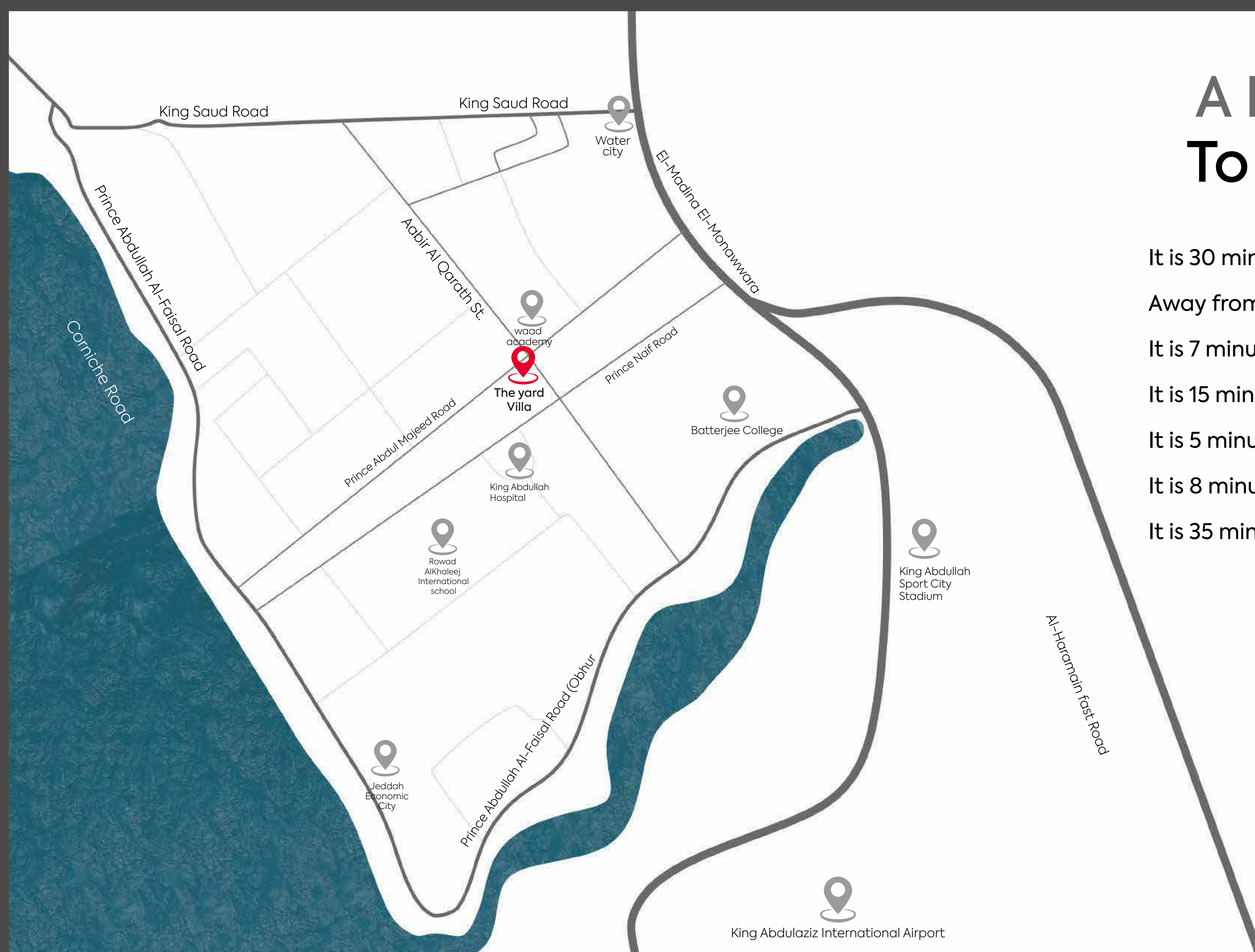
Main Features

- Luxurious entrance for guests
- Establishment of the elevator
- Swimming pool
- Head
- Driver room
- Maid's room
- Two car parks
- Central air conditioners
- Split wall air conditioners for the attached floor
- security cameras

Best Choice For Housing

A Few Minutes To Everywhere

- It is 30 minutes from King Abdulaziz Airport
- Away from the largest water city 10 minutes
- It is 7 minutes from King Abdullah Hospital
- It is 15 minutes from the Kingdom Tower
- It is 5 minutes from Rowad Al Khaleej School
- It is 8 minutes away from Waad academic schools
- It is 35 minutes from the new Corniche



 goo.gl/maps/Z1gN2Ki9NrSSzpuN9


King Abdulaziz International Airport

Building specifications

Quality

Achieving the required level of quality according to the highest standards and construction specifications and under full supervisory supervision

Basics and construction

- Hydrophobic (poly flame)
- Thermal insulators (foam concrete)
- Flooring (luxurious porcelain)
- Paints (Humble)
- Ceiling (gypsum with modern designs)
- Aluminum windows (Saraya 1.8 mm)
- Window glass (securit 18 mm insulated)

Electricity and Mechanics

- Wires and Cables (Saudi cables)
- Seals and keys (legrand)
- Luminescent (led)
- Main Drums (alfanar)

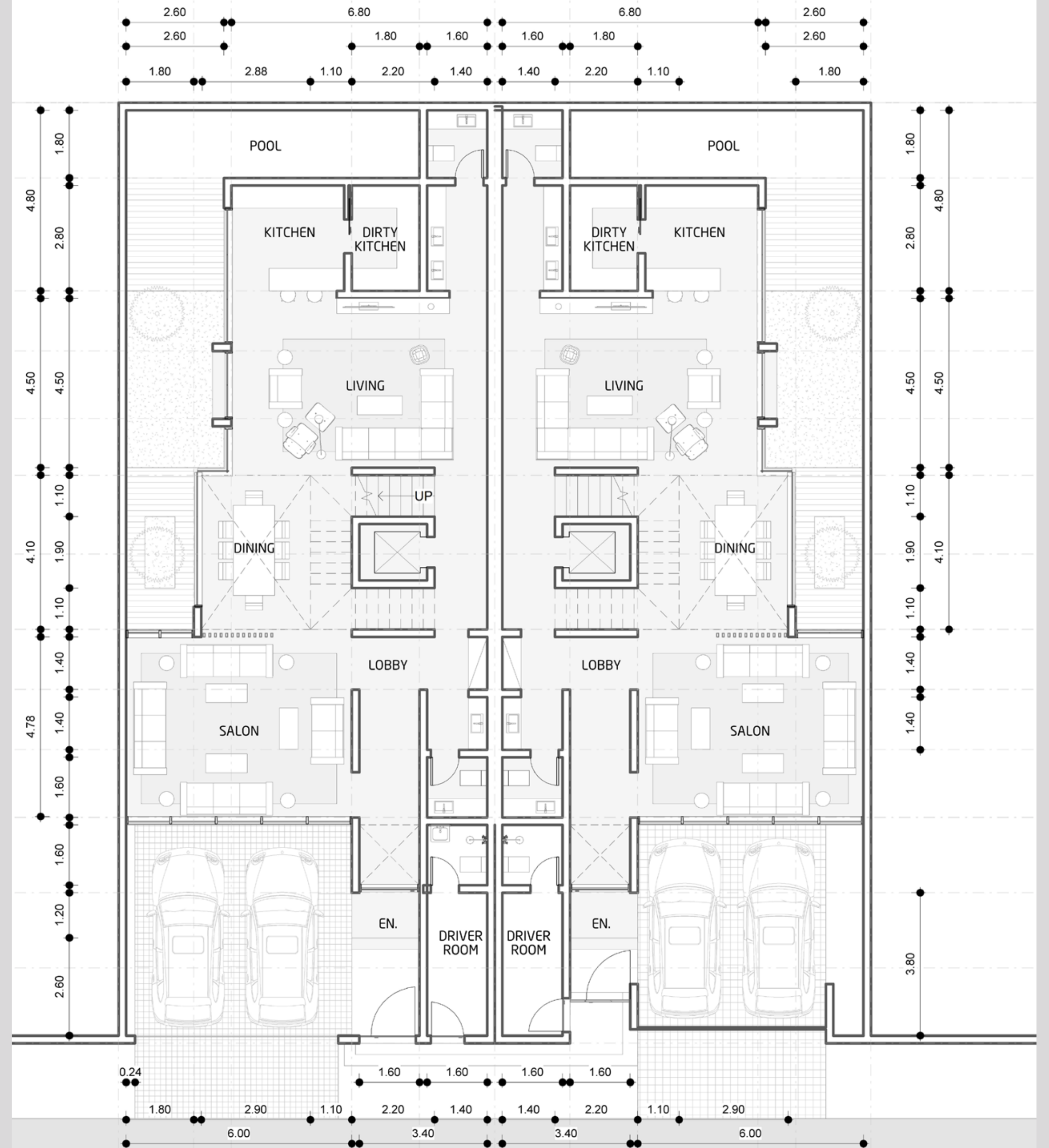
Plumbing and sanitary ware

- Pipes (ajm)
- Sanitary ware (grohe)
- water pumps (grundfos)

Interior Designs

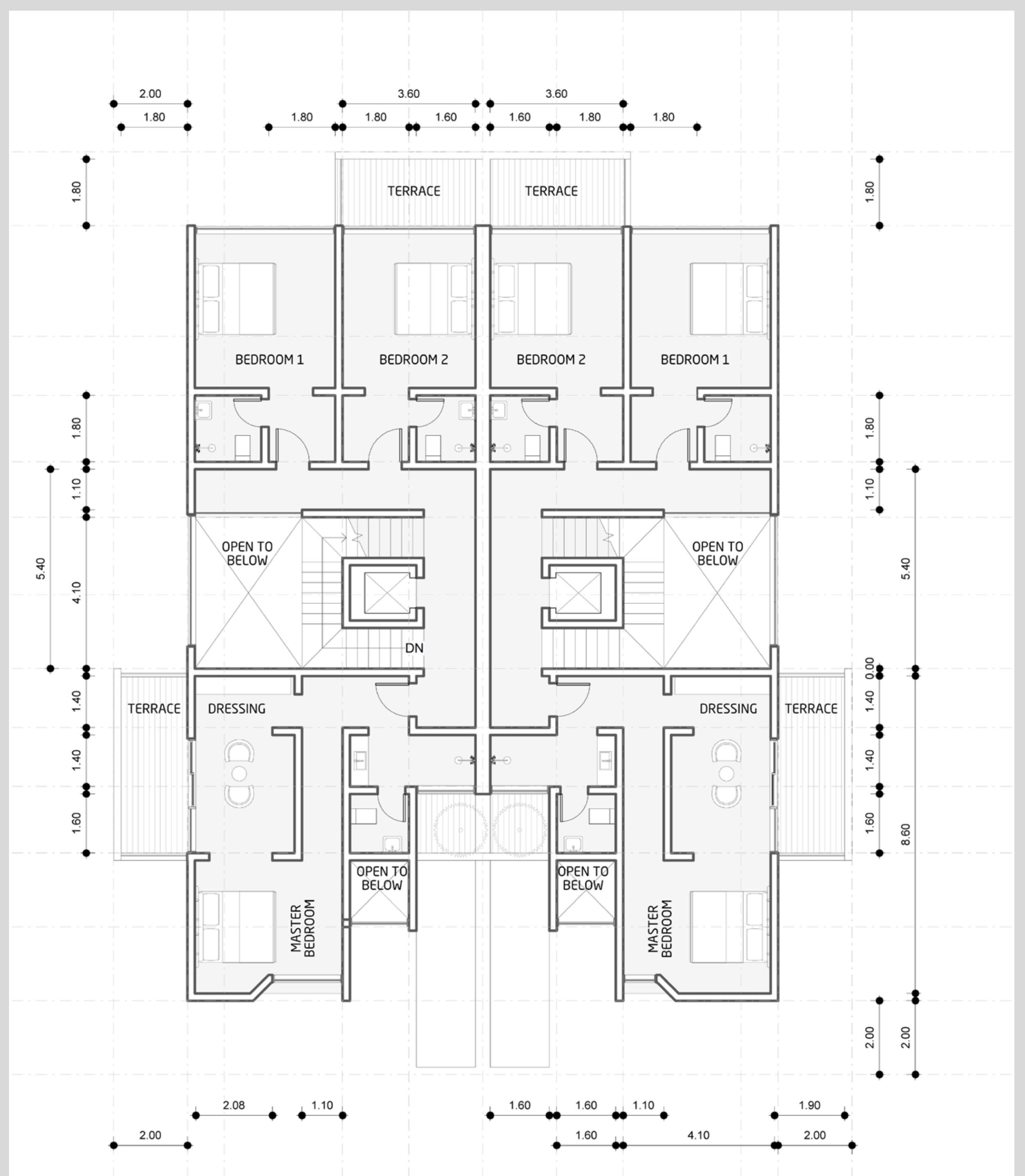
Ground Floor plan

Built Area : 160 m



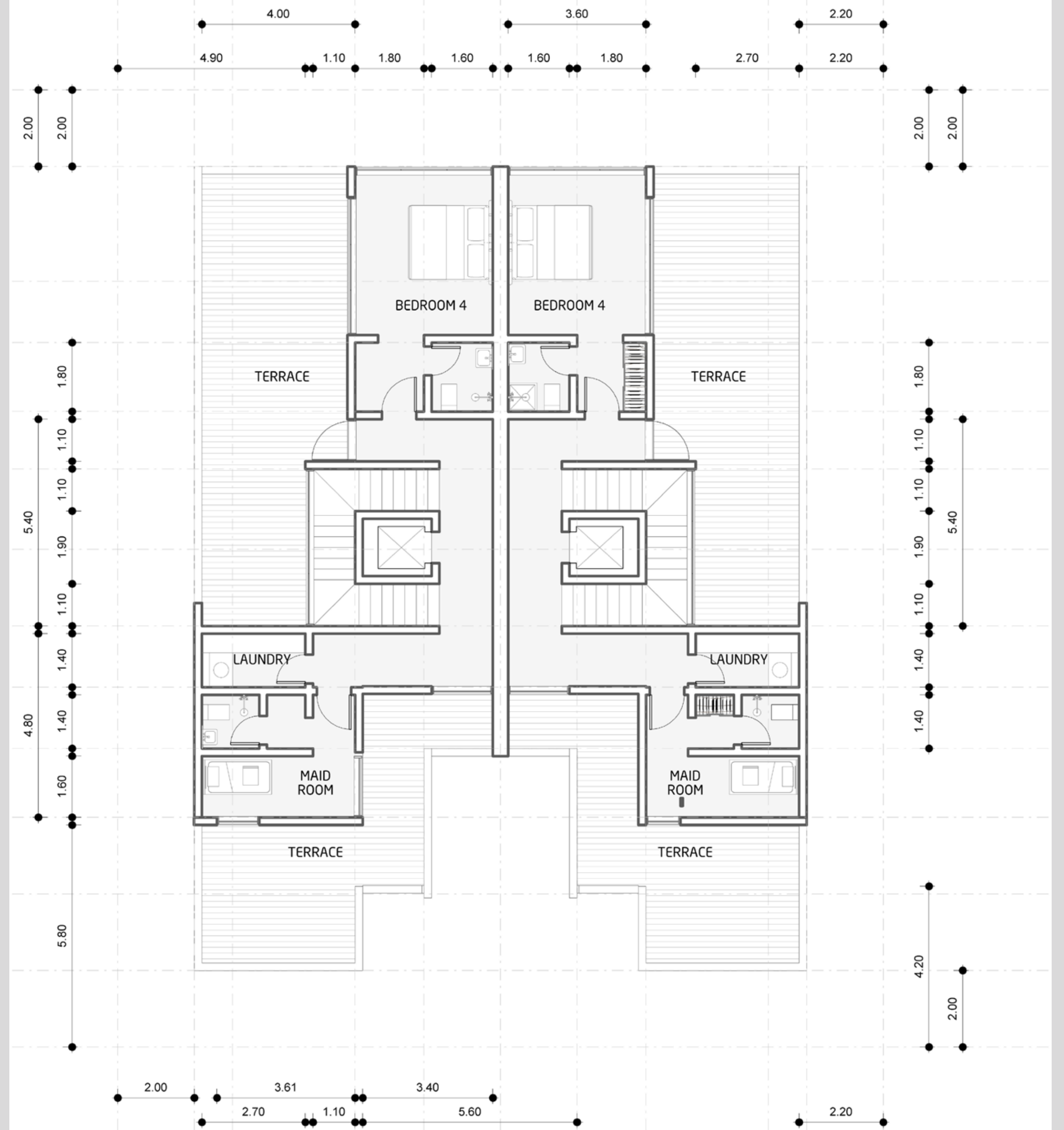
First Floor plan

Built Area : 155 m²



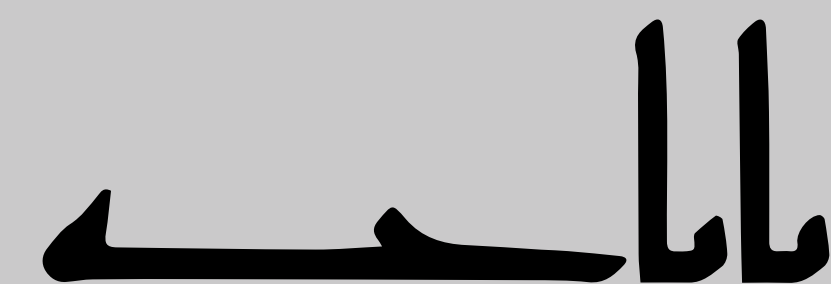
Annex Floor Plan

Built Area : 82 m²

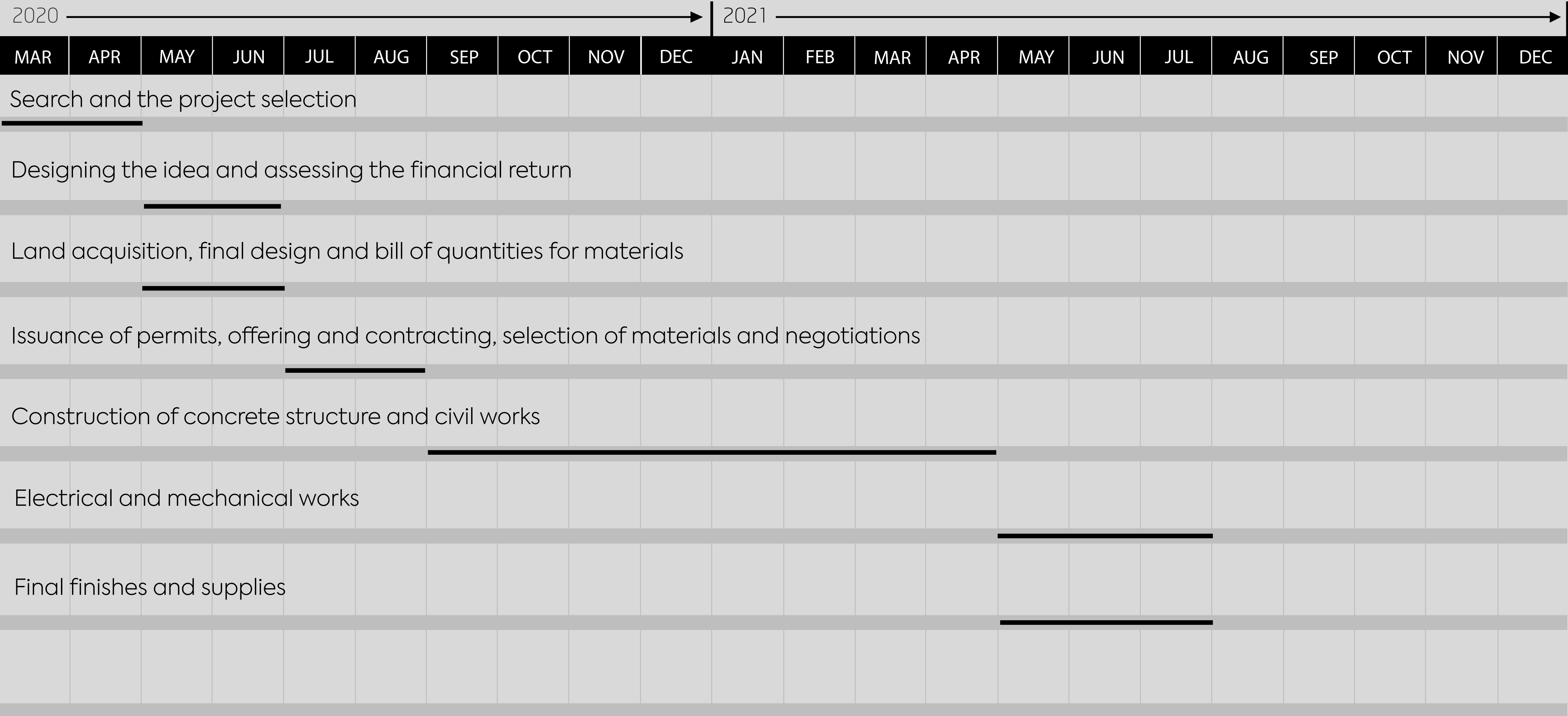


Always
The Best
Brands

Our sincerity is the main motivation of our success
It is what defines everything we think and do...!



Timetable for the project



FH

FUTURE HOMES

Contact Sales

www.fhomes.com.sa

info@fhomes.com.sa

+966-566886692

Thank You

